



- Switzerland, known for chocolate, banking, watches, engineering and scenery
- Swiss chocolatiers Peter and Henri Nestlé invented milk chocolate in 1875
- There are more banks than dentists, and Switzerland has the highest nominal wealth per adult
- Half of the world's luxury watches come from Switzerland, with the first waterproof watch invented by Rolex in 1927.
- Switzerland provides nearly all CO₂-friendly electricity to its citizens. 39% of electricity comes from nuclear power plants, while 56% is generated by hydroelectric power plants.
- Switzerland has 4400 summits (peaks) that are over 2000 m in height., 48 are higher than 4000 m
- Highest proportion of performance cars per head (including RS Audis) in the world
- Home of precision, timeliness and efficiency – just like the Bentley Comms team
- The very first Nobel Peace Prize was awarded to Jean Henri Dunant, a Swiss, in 1901. He is the founder of the International Committee of the Red Cross.
- “The World’s Smallest Toolbox”– the Swiss Army knife – was invented by Karl Elsener.



The Chedi:

- One of the most desirable luxury resorts in the world since its opening in 2013
- Surrounded by the beauty of the Swiss Alps, 1,447m up
- 119 elegant, generous rooms and suites
- Committed to sustainable action, responsible use of resources and regionalism with the aim of continuously reducing CO2 emissions in the region
- 100% of the hotel's electricity comes from hydroelectric and wind power in the Gotthard region
- Cooperates with external partner KITRO to measure and monitor food waste in The Restaurant and staff canteen



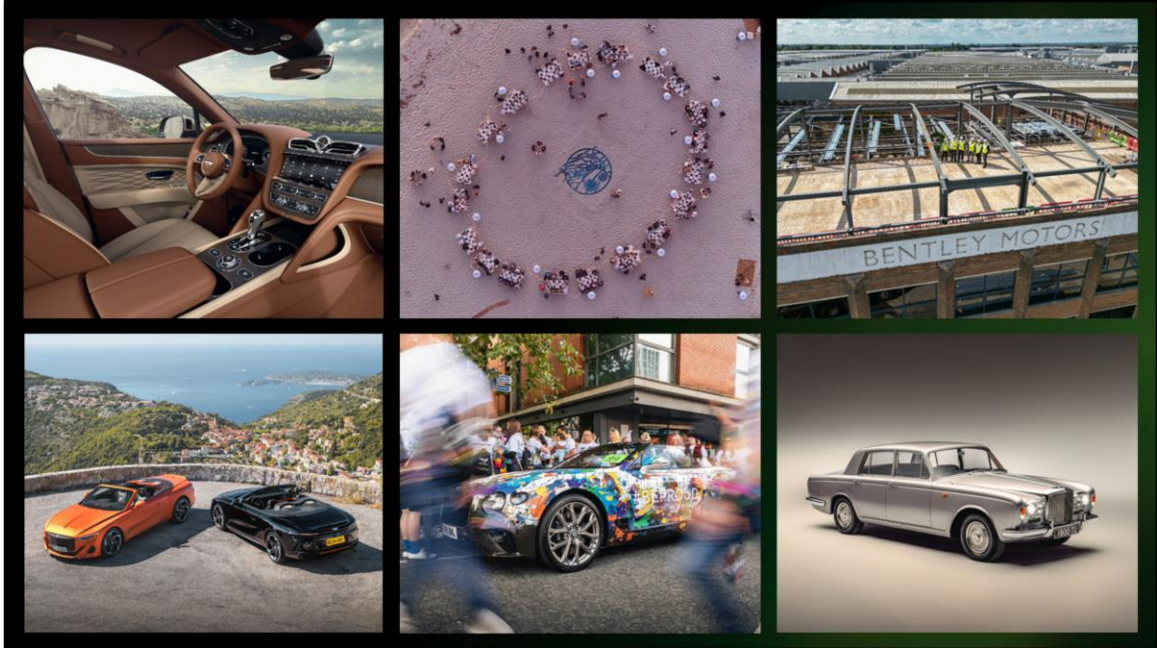
The fleet of cars we're running here is being fueled entirely with R75 eFuel from Porsche, and charged with 100% renewable electricity.

- Almost CO2 neutral
- Existing vehicles can use with no modifications, with existing fuel station infrastructure
- Pilot plant in Chile, location chosen because of constant and strong wind driving a wind turbine (full load for 270 days a year, compared to Germany which would be 66, therefore 4 times better)
- The electricity from the wind turbine powers the electrolysis that produces Hydrogen.
- CO2 is filtered from air - Direct Air Capture (DAC) and combined with the hydrogen to produce methanol
- Methanol is then converted using methanol to gasoline synthesis to produce eFuel
- The eFuel is then refined further to meet current filling station standards
- Target is to produce no more CO2 from the cars than the amount required to produce the fuel originally and therefore a closed loop
- The Pilot Chile plant is aiming to produce 130,000 litres per year
- Fuel to be used for light house projects and development



8 BC NEWS

BREAKING NEWS FROM CREWE



Some Bentley news, from across the business:

1. Bentleyga Extraordinary Journeys Bentleyga
2. Bentley to help the Kelp with support for Californian environmental project -> Bentley Motors announced funding for major environmental initiatives off the Californian coast supported by SeaTrees – a founding partner of the newly-formed Bentley Environmental Foundation. These projects will help restore and monitor kelp forests across three key sites and will kickstart efforts to reintroduce Sunflower Stars to help save California's declining kelp forests.
3. Bentley celebrated a significant milestone in the construction of its new Design Centre with a topping out ceremony, marking the completion of the

building's structural phase. The new Design Centre, which will be completed next year, converts one of Bentley's most historic buildings on site, the famous 'Front of House' with a fresh design and architecture conceptualised by Bentley's very own Design team.

4. Batur Convertible development underway, with a drive that stopped in Monaco

5. Bentley celebrated its year-round support for the LGBTQ+ community with a uniquely-wrapped convertible at this year's Manchester Pride Parade. The colourful Continental GTC featured a design by Rich Morris and was escorted through the flamboyant festival by 75 Bentley colleagues, family and friends.

6. Restoration finished of the very first T Series from 1965



New Flying Spur launched – using the same 782 PS Ultra Performance Hybrid powertrain of the new Continental GT.



Beyond100 Update – First BEV in 2026, won't be a replacement for an existing model, but something new. Fully electrified still in the 2030s, but not by 2030.



A quick history lesson...



The Continental GT is an iconic car for Bentley. Cast your mind back to 1998.

Bentley delivered 414 cars that year.

Volkswagen bought Bentley, for £479m, and set about investing a further £500m for the creation of the first all-new Bentley since 1930

The brief was as true then as it is now:

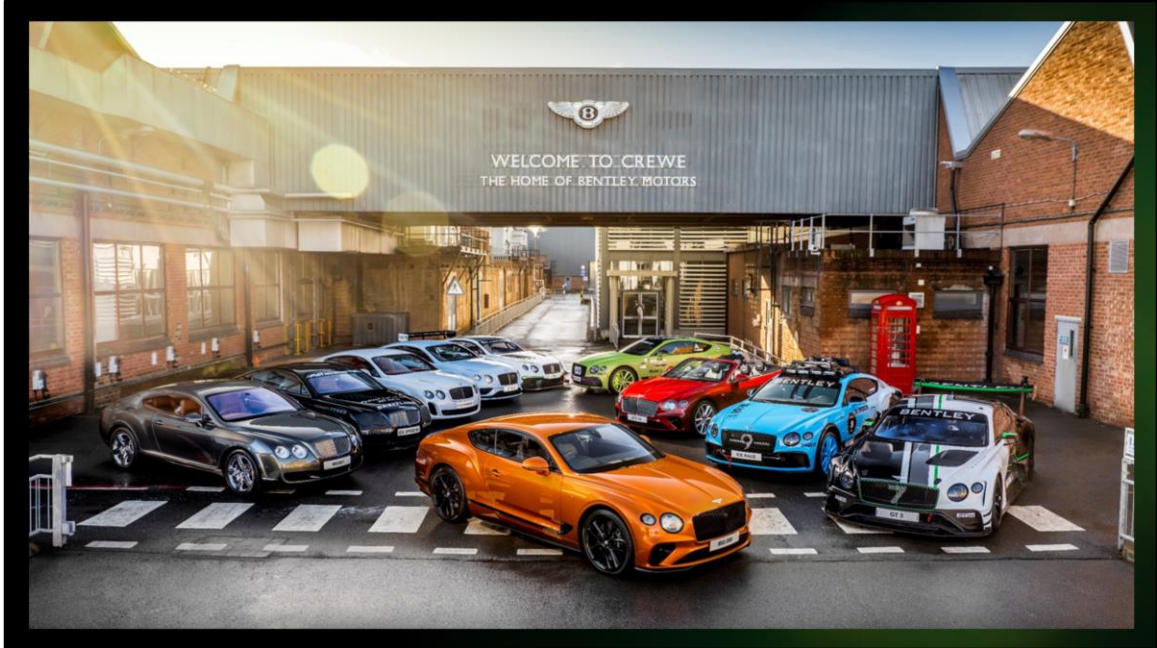
- Widen the appeal of the brand
- Be more sporting than the incumbent models
- Have space for four, with luggage, with supercar performance
- Be designed, engineered and built in Crewe



After four years of design and engineering work , the car – christened Continental GT – was unveiled in prototype form in Paris on 26th September 2002, and in final production specification in Geneva on 5th March 2003.

Between the two shows, more than 3,200 deposits were taken – even though first deliveries weren't to be until November 2003

Meanwhile, the factory was transformed to a state-of-the-art facility, with a new assembly hall with a tenfold capacity increase



The effect was immediate, and dramatic.

In the first year of production, more than 7,500 Bentleys were delivered.
10,000 total cars per year was reached in 2007

Bentley's rebirth was complete.

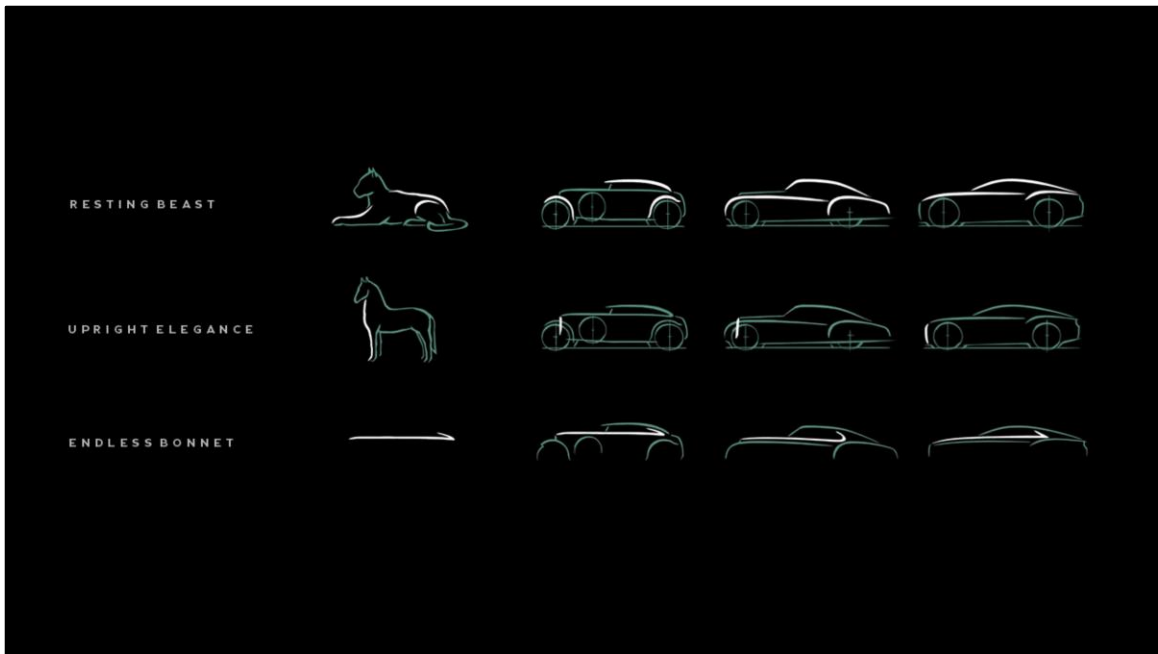
Over three generations, the Continental GT has maintained its position as the benchmark Grand Tourer.

At some point early next year, Bentley will build the 100,000th Continental GT

21 years of progress brings us to this point – the launch of the fourth generation.



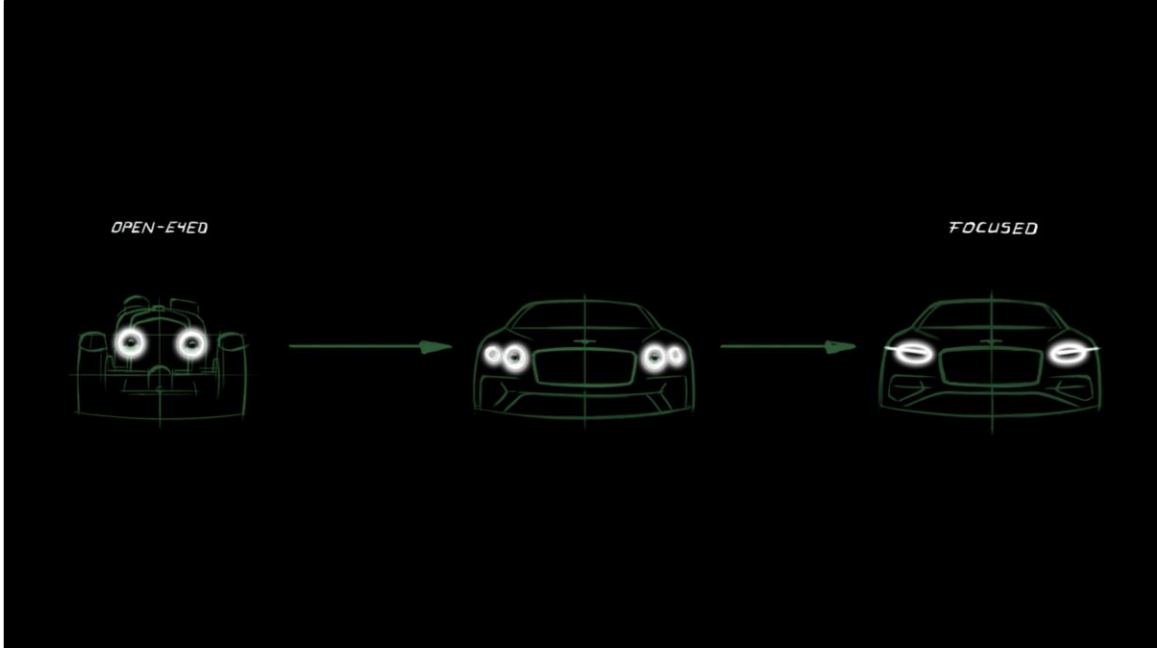




Design Principles Side:

- Every Bentley is designed to the same Design Principles.
- The new GT like every Bentley has the stance of a resting beast – muscular but relaxed and confident with strong well defined haunches indicating the power beneath the skin.
- The front of the car is inspired by the upright elegance of a thoroughbred horse – reinforcing the status of this exceptional luxury grand tourer.
- The 'Endless Bonnet' creates a strong horizontal line through the car indicating the high performance engine and pure speed.





Design Principles Front:

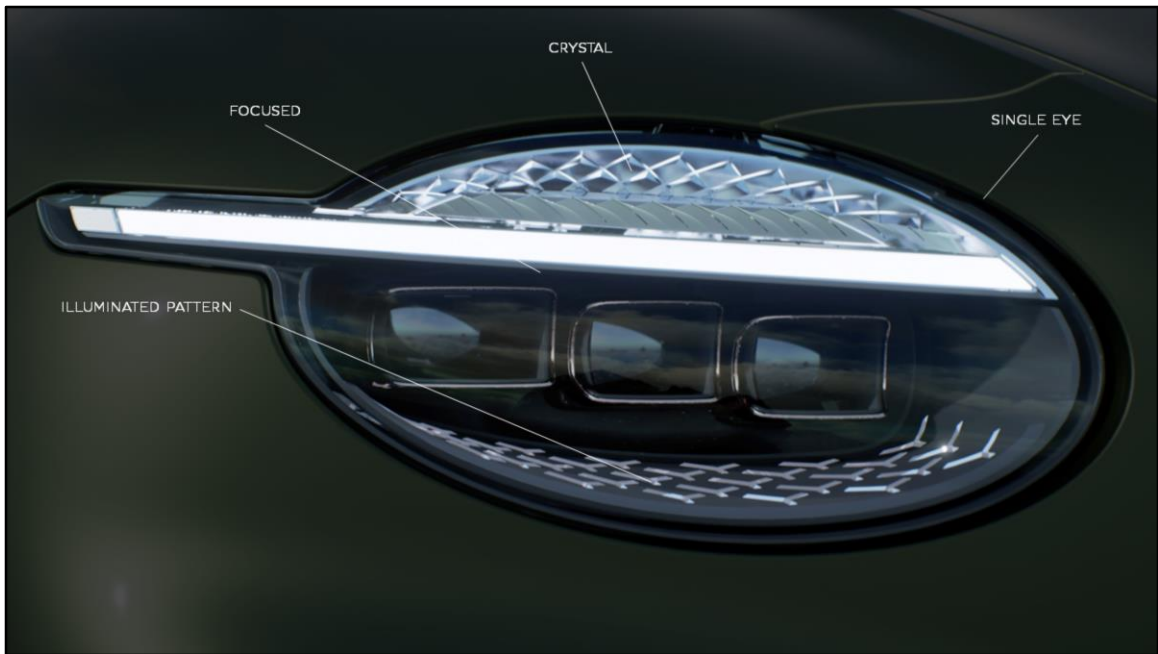
- Historically Bentleys have always had round headlamps from the beginning right up to the current Continental GT
- The new Continental has a new 'Focused Eye' expression with single elliptical lights intersected with a horizontal light bar giving a determined focused expression.
- This is the biggest change in the face of a Bentley in twenty years (since the introduction of the original Continental GT).



- The entire front end of the car is new (bumper, headlamps and grill).
- The headlamp features an illuminated lower pattern and the horizontal 'eyebrow' lamp has a deep crystal cut diamond effect within it.
- The Speed also has a new integrated body kit including the front spoiler and lower grill inserts.



The expression is like that of a predatory tiger.



The headlamp features an illuminated lower pattern and the horizontal 'eyebrow' lamp has a deep crystal cut diamond effect within it.



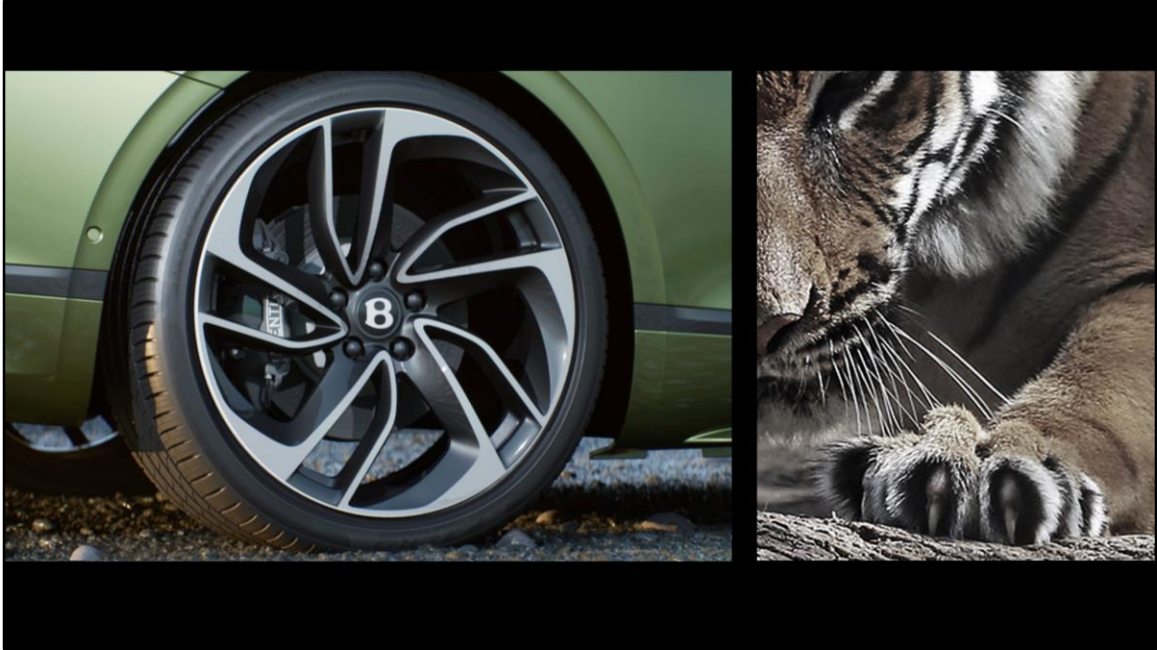
The effect is inspired by cut crystal, or the hundreds of facets of a diamond



- The rear of the car is also completely new (bumper, tail lights, boot lid and exhaust tail pipes).
- The boot lid incorporates a larger rear spoiler and the bumper much is more dramatically styled emphasising the width of the car whilst also being cleaner with less embellishment.
- The tail lights have a dramatic new appearance with a much wider graphic stretching into the boot lid. The lamps protrude out dramatically from the boot and Internally they feature a deep three dimensional diamond pattern across them.



When illuminated the tips of the diamonds are highlighted creating a molten lava like visual effect.



Again, inspiration comes from the tiger – with the ‘claws’ of the wheel digging into the road.



The Continental already features one of the most beautifully executed interiors in the world, and showcases the pinnacle of craftsmanship from the skilled team at our factory in Crewe UK.

Here, we see a new precision quilt pattern features on the seats and doors
And in this image, the bright chrome interior detailing that we already know

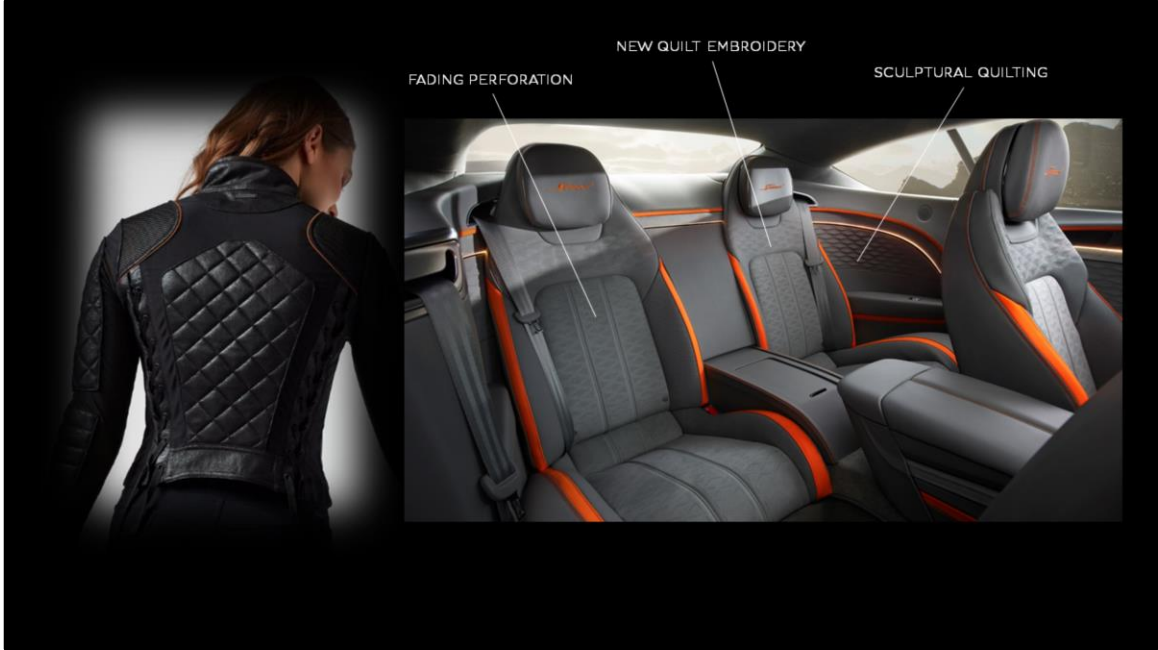


But there's also a new option – to replace all that bright chromework with a dark version, which changes the character of the cabin



The interior of course retains the rotating digital screen allowing a 'digital detox' to the cabin.





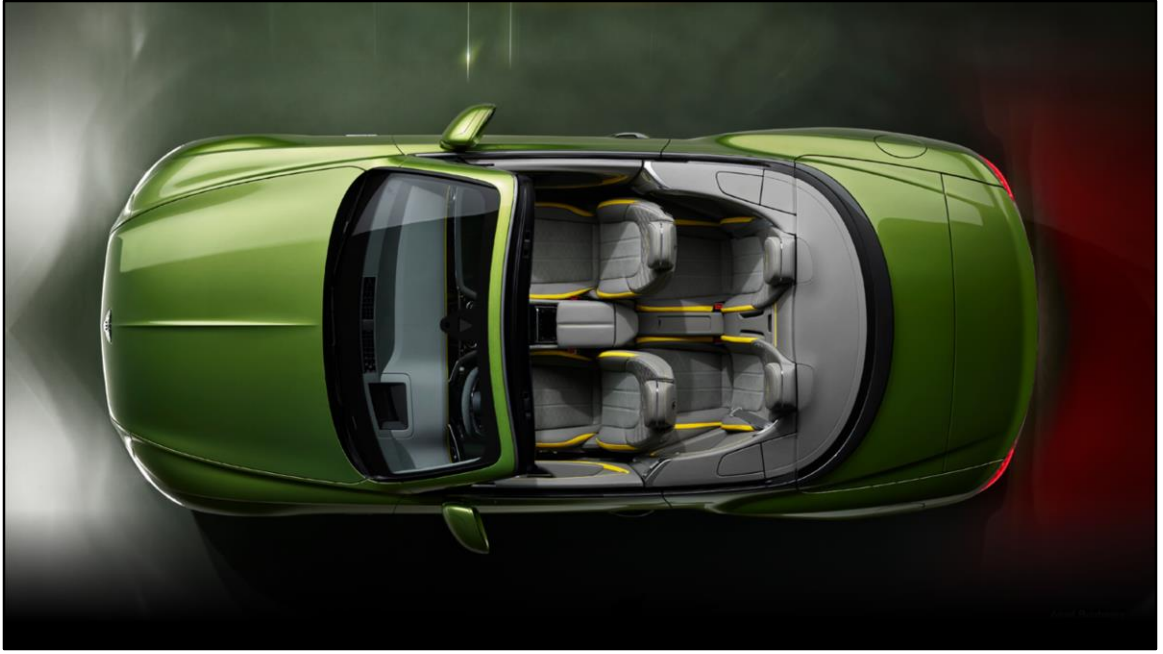
And the precision diamond quilting was inspired by modern fashion design.



The whole interior has a 'cocoon' effect around the occupants.



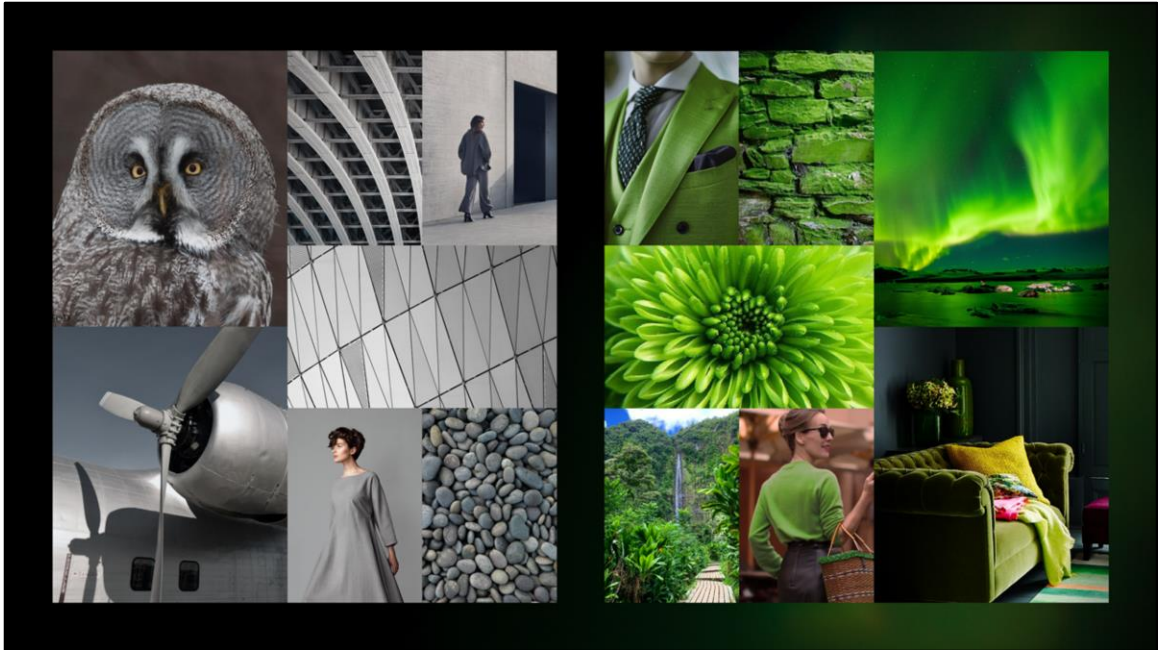
So, that's the new coupe. But for the first time in the history of the Continental GT, concurrent with the launch of the coupe, we're also launching the convertible.







I hope you agree that the new design works perfectly on the convertible design
A muscular and contemporary design statement



To support the launch of new GT

We also are bringing new colours into the palette, *updating our world-class offer of virtually unlimited paint and interior trim combinations.*

This includes a new modern Gravity Grey hide, also offered with a matching sophisticated metallic exterior paint that looks solid until the sunlight hits it, revealing metallic copper accents

The new GT here today is finished in another new colour that is available with the new GT launch

“Tourmaline Green”, a vivid and modern interpretation of the iconic Bentley green

A really striking statement for a new Bentley



I hope you will agree that the muscular new design of the 4th Generation GT and GTC instantly recognisable as a fresh, modern Bentley



I'm sure you're all eager to get into the performance and driving character of this new car, where the changes are truly revolutionary for Bentley

Ultra Performance Hybrid

782 PS combined power
1000 Nm of torque
0-100 kph 3.3 sec



For the new Continental GT we have developed a brand new ULTRA PERFORMANCE HYBRID powertrain

Developed together from start to finish, we bring together a significantly updated 4.0 Litre V8 engine capable of 600PS (584BHP)

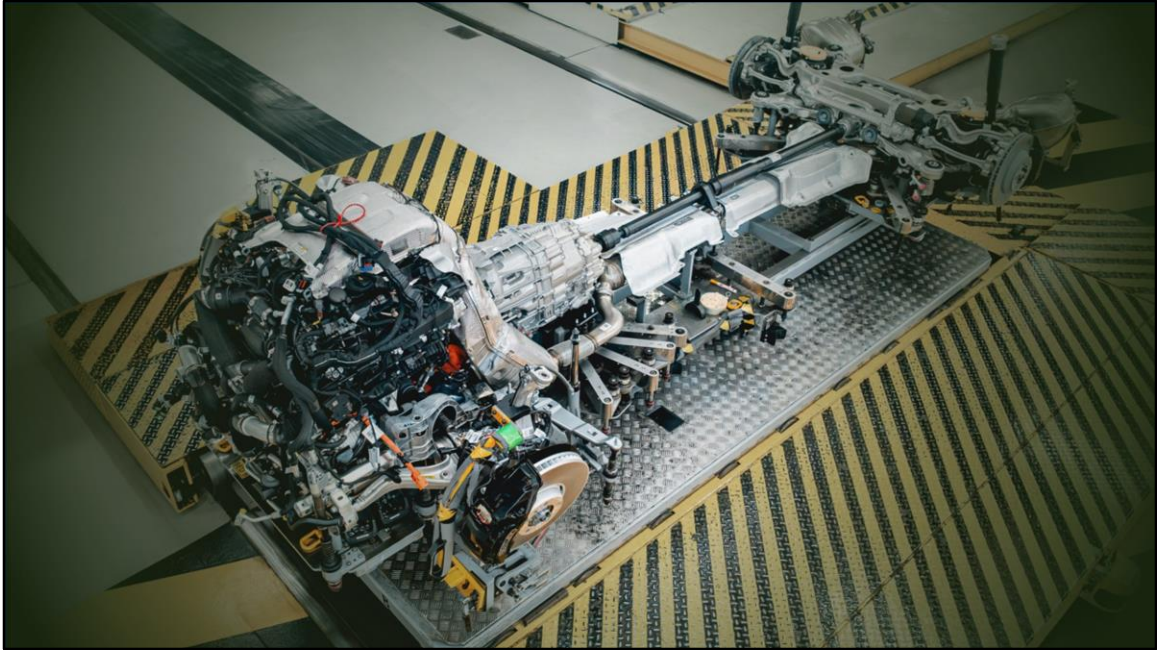
With a 190PS (187BHP) electric motor

To give a combined power of 782PS (771BHP)

The results:

0-60 mph in 3.1 secs

Top speed of 208 mph / 335 km/h



The power is delivered via an 8 speed dual clutch transmission

And an electronic rear differential

To all four wheels, for perfect power delivery and traction every *time*

The system uses active torque vectoring front to rear through a centre diff,
and precision vectoring across the axles using the brakes



There are three key system elements:

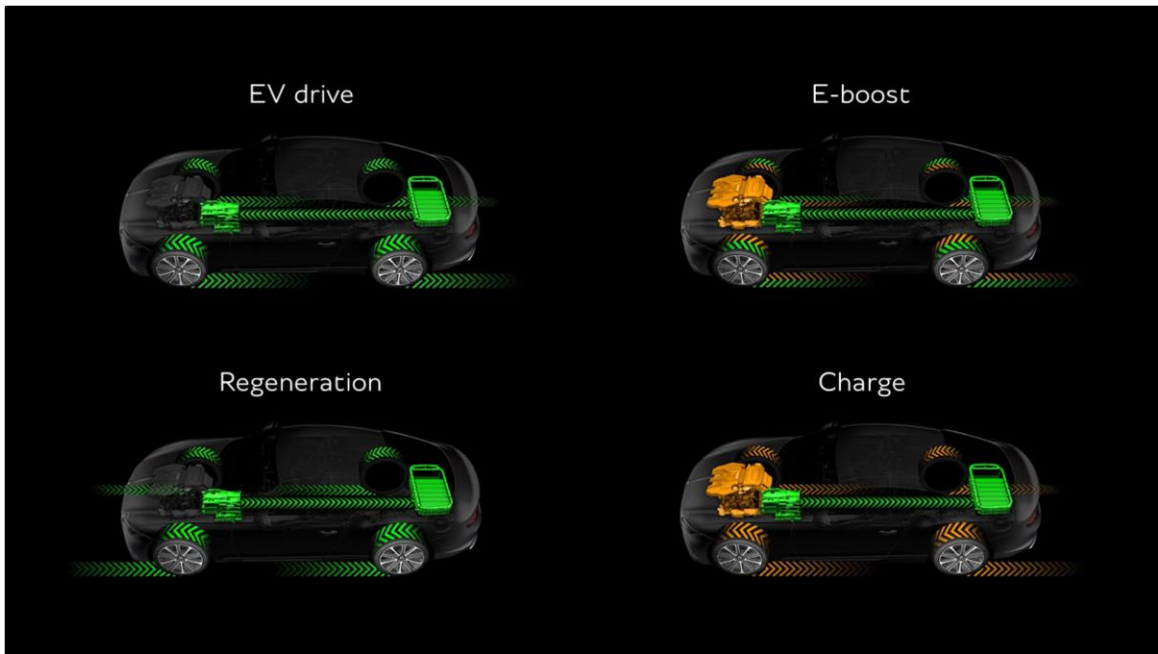
The new 600 PS, 800 Nm V8 engine – with no traditional vacuum system, and 350 bar fuel injection pressure (up from 200) giving cleaner combustion and improved emission

With the e-motor negating turbo lag, single scroll turbochargers are used – which reduces complexity and allows them to run hotter, minimizing emissions

No Cylinder Deactivation hardware, as the engine can be switched off entirely when using the e-motor

Then, the 190 PS, 450 Nm electric motor within the transmission housing. Delivers torque-fill at low engine speed, and does the same during gear shifts for extra smoothness

The 25.9 kWh battery, mounted behind the rear axle. This helps us achieve a perfect weight distribution. 95% of the battery capacity is useable.



And of course, the system operates in any number of energy flows – pure EV, electric boost, regenerative braking – and, most importantly for this new GT – a charge mode, where the engine drives the wheels and charges the battery at the same time. It's a plug-in hybrid, but if you choose to, you never have to plug it in.

Most powerful GT ever

	W12 Speed	New GT Speed
Engine	6.0 litre twin-turbocharged W12	4.0L V8 Ultra Performance Hybrid
Power (PS)	659	782
Torque (Nm)	900	1000
0-100 (kph)	3.6	3.3
Top Speed (kph)	335	335

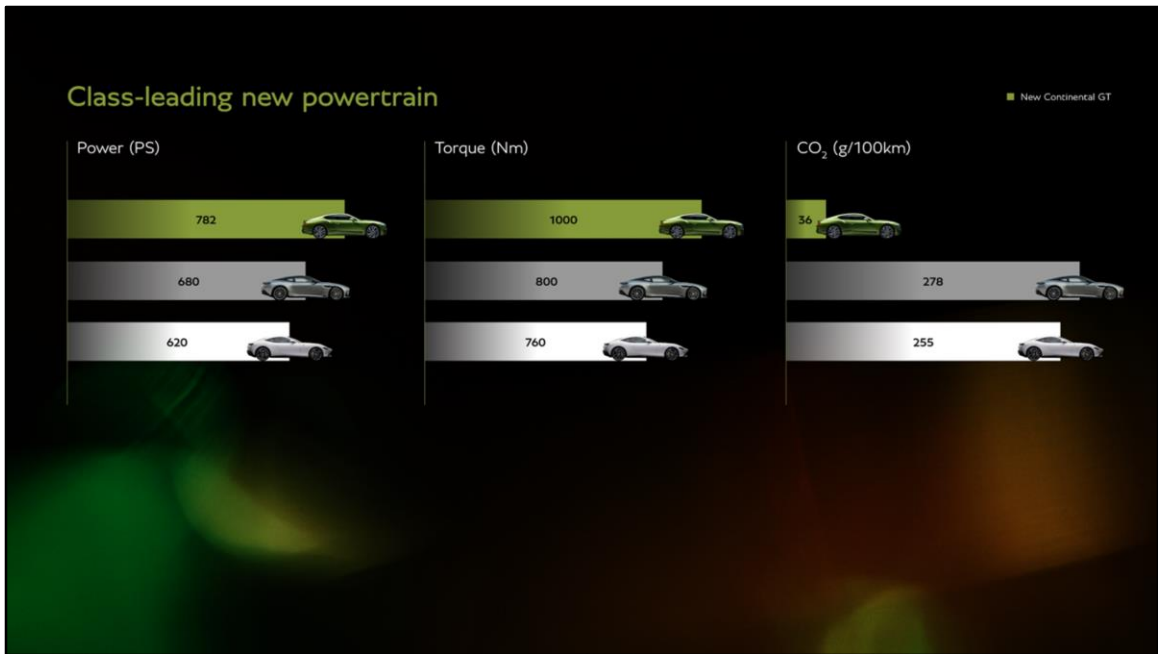


The result is truly spectacular – for performance driving the new GT has 130PS more than today's W12 Speed

Delivers 1000 Nm (738 lbft) of torque

And exceeds the performance of our previous generation Supersports

Making it the most powerful GT we have ever built



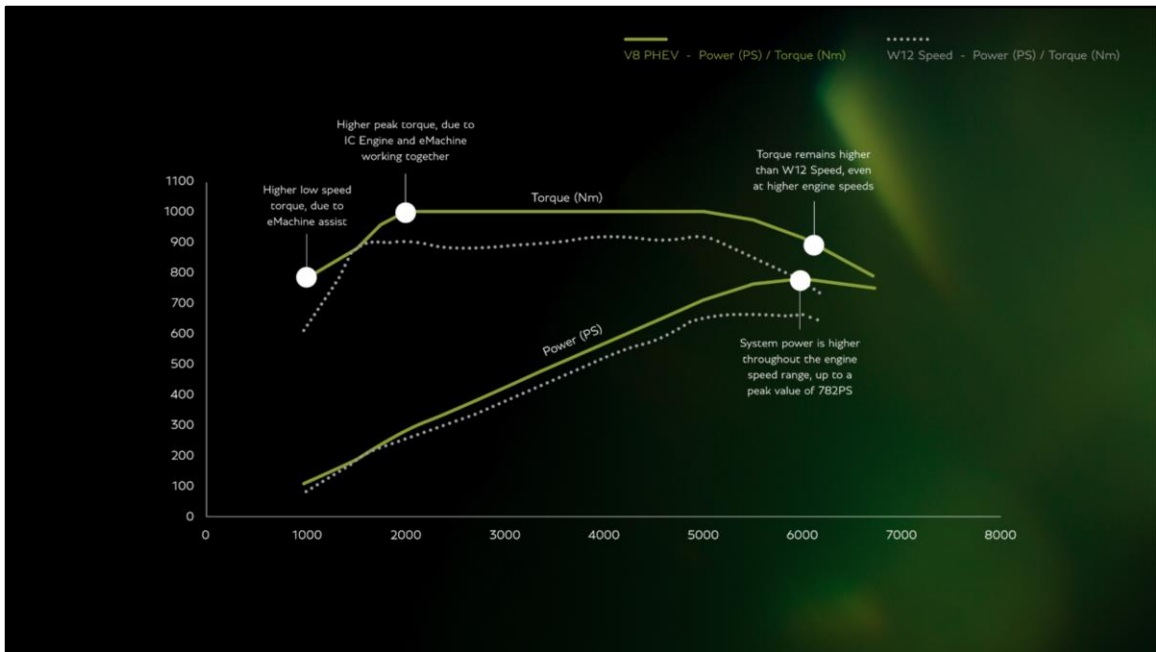
When we compare to GT models from other luxury automotive Brands

You can see how the new class-leading Bentley powertrain delivers extreme performance and sets the Continental apart

With over 100 Horsepower more than the nearest competitor

And 20% more torque for real-world acceleration

The significant drop in CO₂ and fuel consumption figures to around one tenth of conventional Petrol powertrains



Due to the combination of V8 and electric power our engineers have been able to deliver improved power and torque across the full range
 As shown by the upper line on this graph and compared to the 24MY W12 Speed in the dotted line
 This includes a significant boost from the electric motor for strong acceleration from low speeds
 and through the mid-range, combined with increased performance from the V8 at higher speeds.



Equally impressive are HYBRID and FULL ELECTRIC MODE for when you want to enjoy silent and seamless motoring

In full electric mode, the electric motor alone can deliver 190 PS and 450 Nm, which is more than enough to keep up with the traffic in most situations

Full electric mode can be enjoyed:

- * at speeds of up to 87 mph / 140 km/h
- * with throttle applications up to 75%
- * Over a total range of 80km before the petrol engine will fire up

And the electric range can be fully replenished in as little as 2.75 hours thanks to significant improvements in charger and battery capacity.

Whether you're looking for SUPERCAR PERFORMANCE or EFFORTLESS ELECTRIC LUXURY motoring, both are available at the flick of a dial in the new Continental GT

New Bentley Performance Active Chassis

Fully Active Chassis (Standard)

- Active All Wheel Drive
- eLSD
- All Wheel Steering
- Bentley Dynamic Ride

PLUS

- New advanced dual valve damper

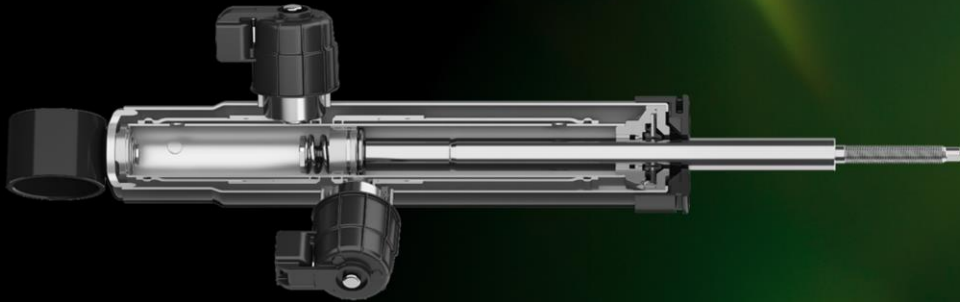
The new GT and GTC models benefit from a new BENTLEY PERFORMANCE ACTIVE CHASSIS which includes all our latest chassis technology:

- Active All Wheel Drive,
- electronic limited slip differential,
- all wheel steering
- Torque vectoring, front to rear and across the axles
- The Bentley Dynamic Ride active anti roll system
- And a new generation of ESC control software

In addition, the car is fitted with a new dual valve damper system and dual chamber air springs, which have given our engineers much more sophisticated tuning options.

The result is that the new cars can achieve an even more impressive combination of performance, handling and comfort

Twin-valve damper: The chassis secret weapon



Twin-valve damping:

- Increased Force spread between Soft/Firm settings – result is reduced compromise between road surface isolation and body control
- Control ECU has complete control over independent compression and rebound damping - result is better body control during compression/rebound directional changes
- Can be as extreme as rebound damping only, or compression damping only

The customer benefit is simple – comfort mode is even more comfortable, and sport mode has even better body control





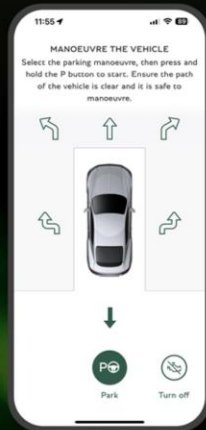
From 25MY the Continental and Flying Spur benefit from new latest generation electrical architecture and a very noticeable step forward in infotainment and driver assistance technology. Too much to go through here while you're getting hungry.

A few examples of the new features include:

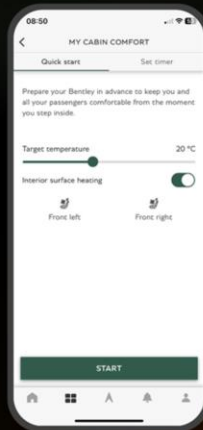
- intelligent park assist – the latest generation self-parking system with speed control
- The environment display, shown here, which enables more seamless driving in semi-autonomous mode and shows the driver how the car is responding to other vehicles
- And a fully updated air conditioning system including air ionisers, a new particulate matter filter and displays showing air quality outside and inside the vehicle

Together the long list of new convenience features will make every journey more relaxed experience, and can be tailored to reflect your personal preferences

Significant upgrade to connected services



Remote park assist



Remote cabin comfort



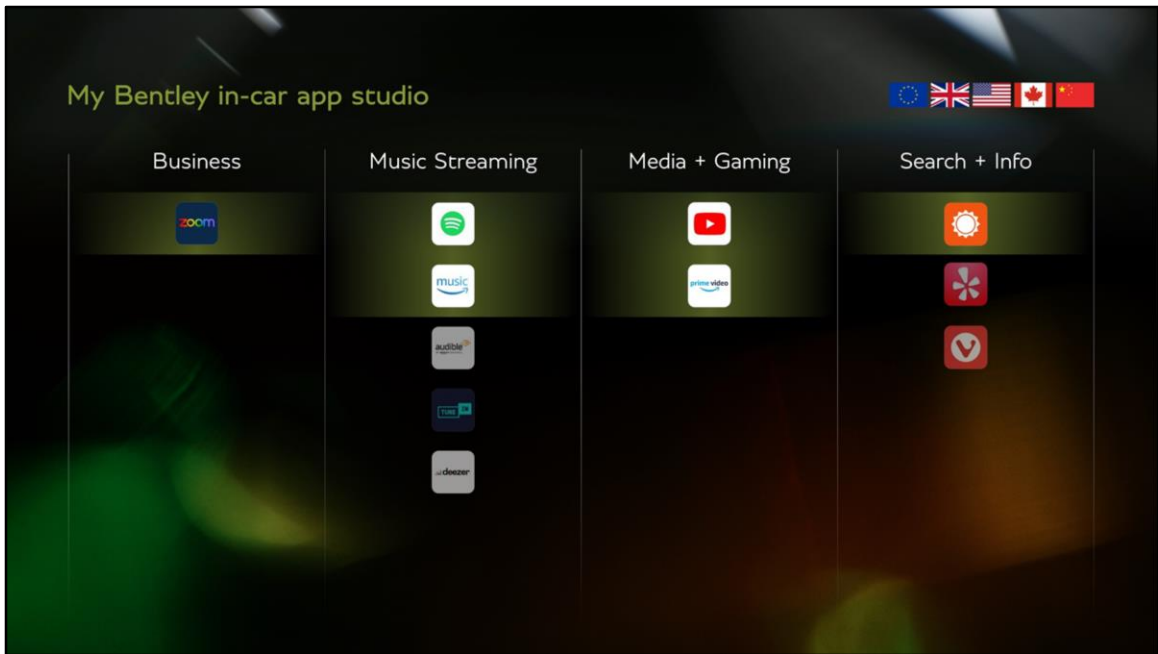
Remote charging

In terms of connected services, standard features include wireless apple carplay, wireless android auto and over-the-air map updates

There are also new remote features such as:

- Remote park assist – enabling you to park or summon your vehicle remotely from your phone
- Remote charging functionality
- And Remote cabin pre-conditioning – ensuring the climate in your car is exactly as you want it at the start of each drive

Each year we roll out new features, such as green traffic light prediction – which is increasingly activated in major cities in the US and Europe and allows a “magic carpet” drive through the city centre



Finally, Bentley is first to the luxury market this year with the “My Bentley app studio” a brand new IN CAR APP STORE

This allows a much more integrated user experience, meaning your most used apps can be downloaded directly into the car – so you don’t even need to pair your phone to enjoy your Spotify playlist, for example.

Summary

1. The most powerful Bentley we've ever created
2. All-new 782 PS powertrain
3. New, bolder design DNA that heralds a design revolution for Bentley
4. World-leading four-seat interior
5. 50 miles / 81 km of electric range, and 29 g/km CO₂
6. Technology delivers an unrivalled user experience for a luxury car

